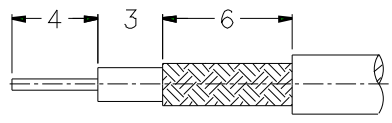
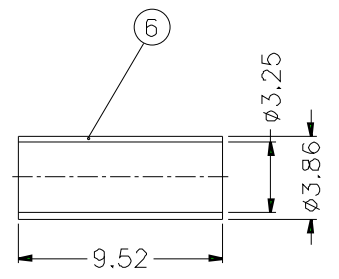
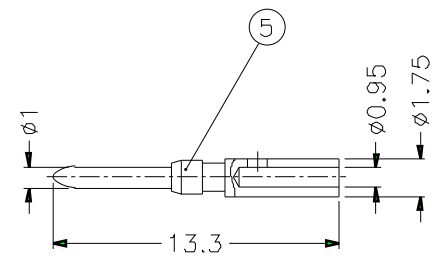
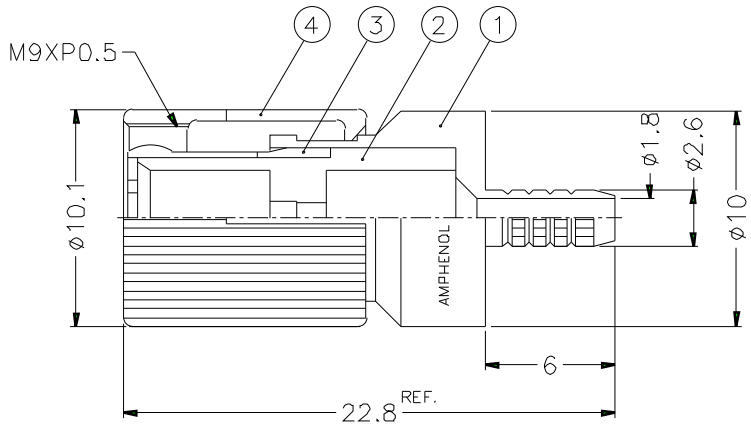


1			2			3			4			5			6			7			8		
REVISIONS																							
ISS	ZONE	DESCRIPTION\PER REQUEST\DATE																					



- CABLES: - RG 179 B/U
 - RG 187 A/U
 - KX 22A
 - KX 3
 - L910/22
 - PT-R 229/46

RECOMMENDED
CABLE STRIPPING DIM'S



- FERRULE CRIMPING TOOLS P/N
 227-944 (M22520/5-01)
 227-1221-03A (M22520/5-03A) HEX: 3.25 L=8.23
- INNER CONTACT CRIMPING TOOL P/N
 413 SP 00 ADJUST TO 5
- CONNECTOR ACCORDING TO NF C 93-570, DIN 47-295, CEI 169-13
- PACKAGING IN BAG WITH COMMERCIAL PART NUMBER AND DATE CODE

DIMENSIONS ARE IN MILLIMETERS										PART NO. 156 929 06			Amphenol						
6	FERRULE	COPPER	NICKEL	1		APPROVED			DATE	10-11-01'	TITLE								
5	CONTACT PIN	BRASS	GOLD	1		CHECKED			DATE	10-11-01'	DRAWING NO.								
4	SHELL	BRASS	NICKEL	1		DRAWN			DATE	10-11-01'	ITEM NO.								
3	OUTER CONTACT	BRONZE	GOLD	1		NO.	DESCRIPTION	MATERIAL	FINISH	Q'TY	DRAWING NO.	SCALE	3/1	ISSUE	A	FILE NO.			
2	INSULATOR	TEFLON	NATURAL	1		1	2	3	4	5	6	7	8						
1	BODY	BRASS	NICKEL	1															